

Jackets - How to ensure a good fit

Jacket Fit

We have classified our jackets into 3 categories - close fit, medium fit and loose fit.

Close fit jackets usually have a tailored look and are meant to be worn close to the body for style or warmth.

Medium fit allows for more body movement and flexibility, and generally has a more casual and relaxed look.

Loose fit refers to an item that is typically worn over other garments and thus is generous in size.

How to ensure a good fit

The best way to ensure a good fit is to spend a minute or two noting down some key measurements for use with our garments. Here are some handy tips:

- Have a dressmakers' tape, pen and notebook ready
- Stand upright and relaxed, keeping the tape firm but not tight
- Measure over undergarments or lightly fitted clothing
- Note the key measurements down to help select your size
- If the garment is for yourself, ask someone to help measure you

Women:

- Chest - Measure loosely around the fullest part of the bust
- Hip - Measure around the fullest part of the seat
- Shoulder - Measure distance from base line of neck to the shoulder line intersection, halve the result
- Sleeve - (Shoulder to wrist) measure from shoulder line intersection, over the elbow to the far end of wrist bone whilst fist is clenched and placed on hip.

Men:

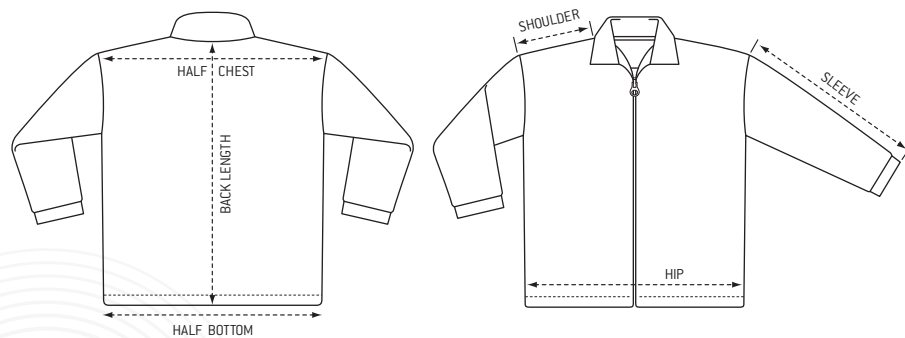
- Chest - Measure loosely around the broadest part of the chest
- Shoulder - Measure distance from base line of neck to the shoulder line intersection
- Sleeve - (Shoulder to wrist) measure from shoulder line intersection, over the elbow to the far end of wrist bone whilst fist is clenched and placed on hip.

How do I use the sizing chart now that I have my measurements?

Firstly, consider the type of fit that your chosen jacket is (ie. close fit, medium fit or loose fit), as this is how the jacket is typically worn.

Some jackets are intended to fit loosely and have a draping quality. Others should to be worn closer to the body for warmth or style. A jacket should always allow ease of movement and be comfortable. As a general rule, add 5cm to your body measurements to determine the jacket size.

E.g.: You decide on a Kosciusko jacket. Your measurements are:
Chest: 125cm Shoulder: 16.5cm Sleeve: 62cm
- therefore the ideal size would be a Small.



Sizing Charts

J501 Kosciusko		Medium Fit	
Back Length	Chest	Shoulder	Sleeve
XXS			
XS			
S	73	125	18 62
M	75	130	19 63
L	77	135	20 64
XL	79	140	21 65
2XL	81	145	22 66
3XL	83	150	23 67
4XL	85	155	24 68

J503 Bass		Loose Fit	
Back Length	Chest	Shoulder	Sleeve
XXS			
XS	79	128	72.5
S/M	82	134	75
L/XL	85	140	77.5
2XL/3XL	88	146	80

J505a Barkley		Close Fit	
Back Length	Chest	Shoulder	Sleeve
XXS			
XS			
S	70	115	15 59
M	72	120	16 60
L	74	125	17 61
XL	76	130	18 62
2XL	78	135	19 63
3XL	80	140	20 64
4XL			

J506a Lady Barkley		Close Fit	
Back Length	Chest	1/2 Bottom	Sleeve
XXS			
XS/8	59	96	50 55
S/10	61	101	52.5 56
M/12	63	106	55 57
L/14	65	111	57.5 58
XL/16	67	116	60 59
2XL/18	69	121	62.5 60
3XL/20	71	126	65 61
4XL			

J507b Wellington		Medium Fit	
Back Length	Chest	Shoulder	Sleeve
XXS	72	110	18 61
XS	74	115	18 62
S	76	120	19 63
M	78	125	19 64
L	80	130	20 65
XL	82	135	20 66
2XL	84	140	21 67
3XL	86	145	21 67
4XL	88	150	22 69

J508a Alpine		Close Fit	
Back Length	Chest	Shoulder	Sleeve
XXS			
XS			
S	68	111	14
M	70	116	15
L	72	121	16
XL	74	126	17
2XL	76	131	18
3XL	78	136	19
4XL			

J510 Collins		Medium Fit	
Back Length	Chest	Shoulder	Sleeve
XXS			
XS			
S	72	121	14 64
M	74	126	15 65
L	76	131	16 66
XL	78	136	17 67
2XL	80	141	18 68
3XL	82	146	19 69
4XL			

J513 Kimberley		Loose Fit	
Back Length	Chest	Shoulder	Sleeve
XXS			
XS	88	114	74
S	90	119	76
M	92	124	78
L	94	129	80
XL	96	134	82
2XL	98	139	84
3XL	100	144	86
4XL			

J515 Storm Vest		Medium Fit	
Back Length	Chest	Shoulder	Sleeve
XXS	61	107	11
XS	63	112	12
S	66	119	13
M	68	124	14
L	70	129	15
XL	72	134	16
2XL	74	139	17
3XL	76	144	18
4XL			

J516 Summit		Medium Fit	
Back Length	Chest	Shoulder	Sleeve
XXS			
XS	68	105	14.5 54
S	70	110	15.5 55
M	72	115	16.5 56
L	74	120	17.5 57
XL	76	125	18.5 58
2XL	78	130	19.5 59
3XL	80	135	20.5 60
4XL			

J523 Lady Collins		Close Fit	
Back Length	Chest	1/2 Bottom	Sleeve
XXS			
XS/8	58	99	51 57
S/10	60	103	53 58
M/12	62	107	55 59
L/14	64	111	57 60
XL/16	66	115	59 61
2XL/18	68	119	61 62
3XL/20	70	123	63 63
4XL			

J524 Hastings		Medium Fit	
Back Length	Chest	1/2 Bottom	Sleeve
XXS			
XS	75	116	55.5 81.5
S	77	121	58 82.5
M	79	126	60.5 83.5
L	81	131	63 84.5
XL	83	136	65.5 85.5
2XL	85	141	68 86.5
3XL	87	146	70.5 87.5
4XL			

J527 Competitor		Medium Fit	
Back Length	Chest	Shoulder	Sleeve
XXS			
XS	75	115	77
S	77	120	78
M	79	125	79
L	81	130	80
XL	83	135	81
2XL	85	140	82
3XL	87	145	83
4XL			

J532a Samson		Close Fit	
Back Length	Chest	Shoulder	Sleeve
XXS			
XS	63	119	61
S	65	124	60
M	67	129	63
L	69	134	66
XL	71	139	69
2XL	73	144	72
3XL	75	149	75
4XL			

J535 JIAP		Loose Fit	
Back Length	Chest	Shoulder	Sleeve
XXS/XS	62	96	11
S/M	72	134	79
L/XL	75	140	83
2XL/3XL	78	146	87

J537a Moreton		Medium Fit	
Back Length	Chest	Shoulder	Sleeve
XXS			
XS			
S	81	116	82
M	83	121	83
L	85	126	84
XL	87	131	85
2XL	89	136	86
3XL	91	141	87

J550 Shadow		Medium Fit	
Back Length	Chest	Shoulder	Sleeve
XXS	65	98	13 59
XS	67	103	14 60
S	69	108	15 61
M	71	113	16 62
L	73	118	17 63
XL	75	123	18 64
2XL	77	128	19 65
3XL	79	133	20 66
4XL			

J551 Thunder		Medium Fit	
Back Length	Chest	Shoulder	Sleeve
XXS	62	96	11
XS	64	101	12
S	66	106	13
M	68	111	14
L	70	116	15
XL	72	121	16
2XL	74	126	17
3XL	76	131	18
4XL			

J555 Sentinel		Loose Fit	
Back Length	Chest	Shoulder	Sleeve
XXS	75	110	54 79
XS	77	115	56.5 80.5
S	79	120	59 82
M	81	125	61.5 83.5
L	83	130	64 85
XL	85	135	66.5 86.5
2XL	87	140	69 88
3XL	89	145	71.5 89.5
4XL			

J565 Collins Lite		Medium Fit	
Back Length	Chest	Shoulder	Sleeve
XXS			
XS	72	119	14 63
M	74	124	15 64
L	76	129	16 65
XL	78	134	17 66
2XL	80	139	18 67
3XL	82	144	19 68
4XL			

J566 Lady Collins Lite		Close Fit	
Back Length	Chest	Shoulder	Sleeve
XXS			
XS/8	58	99	9 57
S/10	60	103	10 58
M/12	62	107	11 59
L/14	64	111	12 60
XL/16	66	115	13 61
2XL/18	68	119	14 62
3XL/20	70	123	15 63
4XL			

J570 Rawson		Medium Fit	
Back Length	1/2 Chest	Shoulder	Sleeve
XXS			
XS	72	56	15.5 63
S	74	58.5	16.25 64
M	76	61	17 65
L	78	63.5	17.75 66
XL	80	66	18.5 67
2XL	82	68.5	19.25 68
3XL	84	71	20 69
4XL			

J571 Rawson Vest		Medium Fit	
Back Length	1/2 Chest	Shoulder	Sleeve
XXS			
XS	72	52	14.5
S	74	58.5	15.25
M	76	61	16
L	78	63.5	16.75
XL	80	66	17.5
2XL	82	68.5	18.25
3XL	84	71	19
4XL			

J575 Pulse		Medium Fit	
Back Length	1/2 Chest	Shoulder	Sleeve
XXS	65	49	13 59
XS	67	51.5	14 60
S	69	54	15 61
M	71	56.5	16 62
L	73	59	17 63
XL	75	61.5	18 64
2XL	77	64	19 65
3XL	79	66.5	20 66
4XL			

J580 Pursuit		Loose Fit	
Back Length	1/2 Chest	Shoulder	Sleeve
XXS	72	55	18 61
XS	74	57.5	18 62
S	76	60	19 63
M	78	62.5	19 64
L	80	65	20 65
XL	82	67.5	20 66
2XL	84	70	21 67
3XL	86	72.5	21 68
4XL	88	75	22 69

J585 Platinum		Loose Fit	
Back Length	1/2 Chest	Shoulder	Sleeve
XXS	74	53.5	18 62
XS	76	56	19 63
M	78	58.5	19 64
L	80	61	20 65
XL	82	63.5	20 66
2XL	84	66	21 67
3XL	86	68.5	21 68
4XL			

J590 Walkabout		Loose Fit	
Back Length	1/2 Chest	Shoulder	Sleeve
XXS	72	55	18 61
XS	74	57.5	18 62
S	76	60	19 63
M	78	62.5	19 64
L	80	65	20 65
XL	82	67.5	20 66